
INTEGRATION JOINT BOARD DIRECTIONS: MAY 2023

**Report by Joint Director, Health and Social Care /
Chief Officer, Integration Joint Board**

Scottish Borders Council

29 June 2023

1 PURPOSE AND SUMMARY

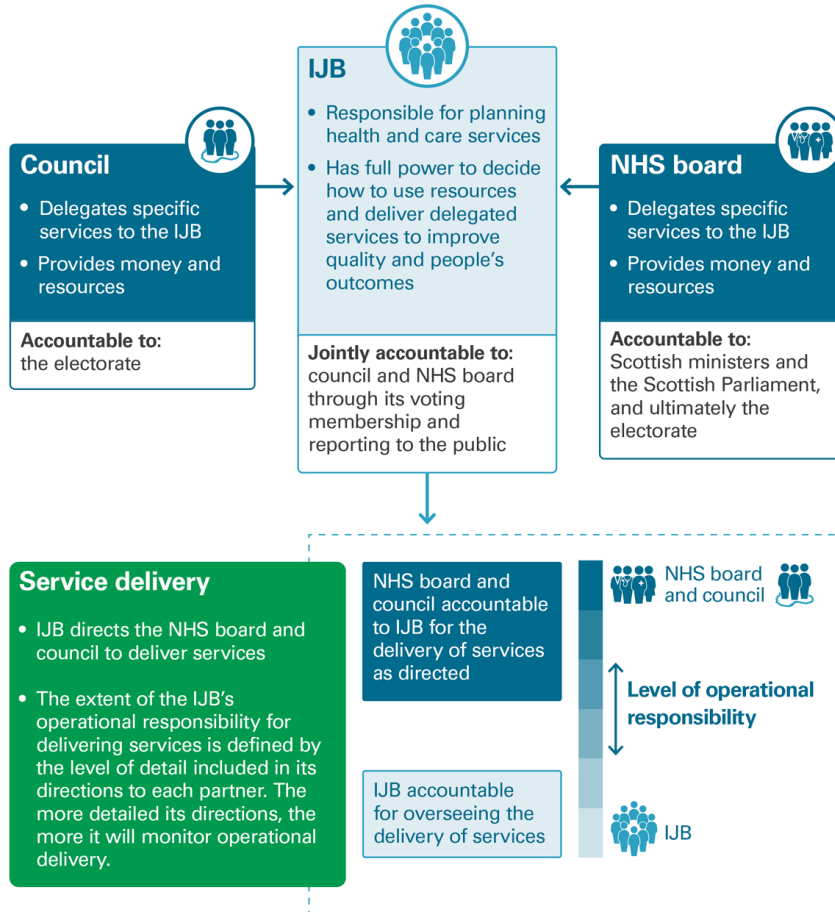
- 1.1 This report provides an update to the Scottish Borders Council on the Directions issued to the Scottish Borders Council from the Health and Social Care Integration Joint Board at their May 2023 meeting.
- 1.2 The Directions issued by the Integration Joint Board in May 2023 relate to:
 - (a) the implementation of the new Teviot and Liddesdale Day service in Hawick;
 - (b) the establishment of a Community Integration Group (Locality Working Group) pathfinder in the Eildon locality;
 - (c) the implementation of the homecare night support pathfinder in the Duns area; and
 - (d) the scoping of revenue costs for the Tweedbank and Hawick Care Village programme.

2 RECOMMENDATIONS

- 2.1 **I recommend that the Council notes the Directions issued by the Health and Social Care Integration Joint Board to the Scottish Borders Council**

3 BACKGROUND

3.1 The Public Bodies (Joint Working) (Scotland) Act 2014 (the Act) outlines the arrangements for delegating services and resources from Local Authorities and Health Boards to Integration Joint Boards. These arrangements are summarised at a high level in the Audit Scotland diagram below.



Source: [What is integration? A short guide to the integration of health and social care services in Scotland](#), April 2018, Audit Scotland

3.2 Under these arrangements, the responsibility for decisions about the planning and strategic commissioning of all health and social care functions that have been delegated by the Council and the Health Board sit with the Integration Joint Board as a statutory public body.

3.3 The Act states that an Integration Joint Board must direct their partner authorities to carry out each function delegated to the Integration Joint Board.

3.4 Directions are a legal mechanism intended to clarify responsibilities requirements between partners. The primary purpose of Directions are to set a clear framework for the resourcing and operational delivery of the functions that have been delegated to the Integration Joint Board and to clearly convey the decision(s) made by the Integration Joint Board about any given function(s).

- 3.5 Within our local context, the "Integration Joint Board Directions Policy and Procedure" ensures that all Directions that affect the Scottish Borders Council are developed in partnership between the Integration Joint Board and Scottish Borders Council, so that when they are issued, these are supported and understood.
- 3.6 This update is included to ensure that Integration Joint Board directions issued to the Scottish Borders Council are shared with all Elected Members at Full Council so as to ensure that Elected Members are fully sighted, and as a matter of record.

4 DIRECTIONS ISSUED FOLLOWING IJB MEETING IN MAY 2023

- 4.1 The 'implementation of the new Teviot and Liddesdale Day service in Hawick' Direction is enclosed in Appendix 1. Further information is enclosed in a separate paper for Council.
- 4.2. The 'establishment of a Community Integration Group (Locality Working Group) pathfinder in the Eildon locality' is enclosed in Appendix 2. This relates to work to re-establish the groups formerly known as Locality Working Groups in the Eildon area as a pathfinder. Having functioning groups at locality level which have a key role in the planning of delegated services, and in decision-making are a statutory requirement for Integration Joint Boards. These will align to the five Area Partnership localities and there will be a close synergy between the Community Integration Groups and the Area Partnerships. The focus of the Community Integration Groups will be to map services at locality level; and bring together social care, social work, health, the third sector, commissioned partners and communities to focus on prevention and early intervention, and reducing poverty and inequalities.
- 4.3 The 'implementation of the homecare night support pathfinder in the Duns area' direction is enclosed in Appendix 3. This follows from the pathfinder in the Peebles area and the consultation that was launched. On analysis of the consultation results, it became apparent that the main concerns related to areas where respondents felt that provision would not be in place, when it indeed would be. As a result a Frequently Asked Questions document was developed to address these concerns. Unfortunately 68% of the responses had been received in the first three days prior to the Frequently Asked Questions document being published, and had this information been available then it is expected that this additional context would have helped to better inform respondents about the proposed redesign. As a result, the Integration Joint Board supported a further pathfinder in the Duns area.
- 4.4 The 'scoping of revenue costs for the Tweedbank and Hawick Care Village programme' is enclosed in Appendix 4. As the social care function and revenue for the care villages sits within the Integration Joint Board's delegation and delegated budget, an original direction was considered in the February 2023 Integration Joint Board meeting when considering the Hawick Care Village Outline Business Case. However at the meeting it was agreed that NHS Borders should also be formally directed to ensure that this is in their work programme due to the necessary consideration of the health service input into the Care Villages.

5 IMPLICATIONS

5.1 Financial

There are no costs attached to any of the recommendations contained in this report, however both Directions contain detail on the impacts on the budget delegated to the Integration Joint Board.

5.2 Risk and Mitigations

As Directions are developed in partnership with the Scottish Borders Council, no specific concerns need to be addressed.

5.3 Integrated Impact Assessment

Integrated Impact Assessments have been undertaken in relation to the work that led to these Directions, in line with the Integration Joint Board's Equality duties in its capacity as a Public Body. These are available in the Integration Joint Board meeting papers, referenced in the background papers below.

5.4 Sustainable Development Goals

The Integration Joint Board works to achieve the following Sustainable Development Goals:

- Goal 3: Ensure healthy lives and promote well-being for all at all ages
- Goal 5: Achieve gender equality and empower all women and girls
- Goal 8: Promote inclusive and sustainable economic growth, employment and decent work for all
- Goal 10: Reduce inequality within and among countries
- Goal 16: Promote just, peaceful and inclusive societies
- Goal 17: Revitalise the global partnership for sustainable development

5.5 Climate Change

There are no related climate impacts associated with this report.

5.6 Rural Proofing

n/a

5.7 Data Protection Impact Statement

There are no personal data implications arising from the proposals contained in this report.

5.8 Changes to Scheme of Administration or Scheme of Delegation

No changes to the Scheme of Administration or Scheme of Delegation are required.

6 CONSULTATION

- 6.1 The Chief Executive, Director (Finance & Corporate Governance), the Monitoring Officer/Chief Legal Officer, the Chief Officer Audit and Risk, the Director (People Performance & Change), the Clerk to the Council and Corporate Communications have been consulted.

Approved by

Name **Chris Myers** **Title** **Joint Director, Health and Social Care**

Author(s)

Name	Designation and Contact Number
Chris Myers	Joint Director, Health and Social Care / Chief Officer Integration Joint Board

Background Papers:

Scottish Borders Health and Social Care Integration Joint Board 17 May 2023 paper.
Available from:

<https://scottishborders.moderngov.co.uk/ieListDocuments.aspx?CIId=218&MIId=6535&Ver=4>

Scottish Borders Health and Social Care Integration Joint Board Directions Policy and Procedure. Available from 12 December 2021 papers (page 21):

<https://scottishborders.moderngov.co.uk/documents/s61363/IJB%2015.12.21%20Agenda%20pack.pdf#page=21>

Directions from integration authorities to health boards and local authorities: statutory guidance. Available from: <https://www.gov.scot/publications/statutory-guidance-directions-integration-authorities-health-boards-local-authorities/>

Previous Minute Reference: n/a

Note – You can get this document on tape, in Braille, large print and various computer formats by contacting the address below.

Contact us at Chris Myers chris.myers@scotborders.gov.uk